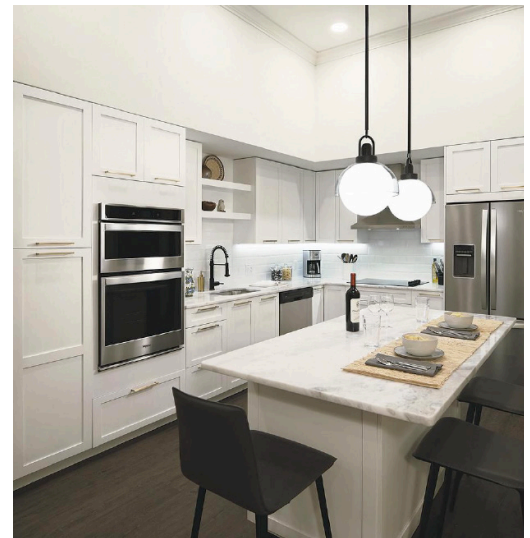


HOT PROPERTY

# ZOM Living to open Wellington's first independent-living community

By Robyn A. Friedman



**Z**OM Senior Living, the senior-living development division of multifamily developer ZOM Living, in partnership with Liberty Healthcare Management, will soon be delivering its first development for older adults – and the first independent-living community in the Village of Wellington.

Wellington Bay, located at 2590 Wellington Bay Drive, will offer a continuum of care to its residents, with a total of 283 units comprised of independent- and assisted-living and memory care.

The independent-living units will include 113 apartments, 36 “garden flats,” three-story residences with elevators and 10 single-story freestanding “villas,” which have two bedrooms, two baths, a study, a two-car garage and a private patio.

For those needing more care, the campus also will include the Lisbet Health Care Center, which houses both the assisted living and memory support areas. Lisbet Assisted Living will offer 100 studio, one-bedroom and two-bedroom units, and the Memory Support Center will have 24 memory-care units.

Amenities at Wellington Bay include an on-site spa offering massages, hair-styling and nail services, walking trails, lakes, pickleball, bocce, an outdoor pool and open-air bars. There’s also a 65,000-square-foot clubhouse with a bar, billiards and poker tables, card rooms, a library, art room and indoor pool. There will be multiple dining venues as well.

Completion of the garden flats and villas at Wellington Bay is expected by the end of this year, while the apartments and clubhouse will open in the first quarter of 2022. The community is 60-percent pre-leased; rental rates range from \$5,400 to \$10,400 per month.



*For more information, call 561-335-5405 or visit [wellingtonbayfl.com](http://wellingtonbayfl.com).*